

FIGURE
1002

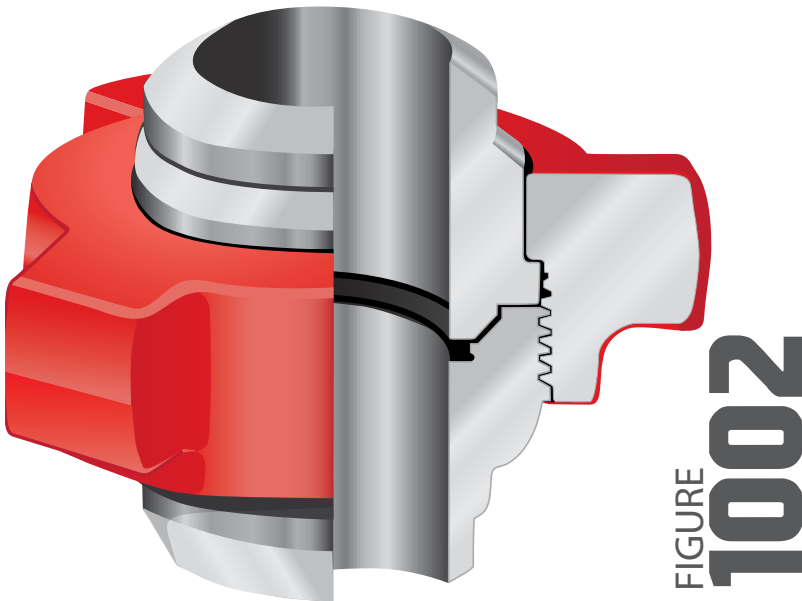


FIGURE
1002

PIPE COUPLINGS

HAMMER UNION - FIGURE 1002
& FIGURE 1002 BUTT WELD

10,000 PSI CWP - 15,000 PSI TEST

FEATURES & APPLICATIONS:

- Alloy steel forgings for high-pressure manifold & treating connections, such as cementing, fracturing & acidizing. Employs a double seal that combines an elastomeric gasket with a metal-to-metal connection.
- Figure 1002 is specifically designed to minimize fluid flow turbulence. The BUNA-N replaceable lip-type seal ring that provides this capability also provides a pressure seal and protection for the metal-to-metal seating surfaces. These unions are recommended for use on high pressure systems and trucks, as well as air, water, oil, gas or mud service where working pressures do not exceed 10,000 PSI NSCWP.

TECHNICAL DATA:

- **Sizes:** 1" - 4"
- **Pressure Rating:** 10,000 PSI NSCWP
 - 5" Threaded derated to 5,000 PSI
 - 5" & 6" butt-weld derated to 7,500 PSI
- **End Connections:** Threaded & Butt-Weld
- **Butt-Weld Schedules:** 160 & XXH
- **BUNA-N lip-type seal ring** (-20°F to 250°F)
- **Color Code:** Blue Subs / Red Nut

10000 PSI CWP		
SIZE	FIGURE 1002	BUTT WELD FIGURE 1002
1"	HU1002-100T	HU1002-100BW
1 1/2"	HU1002-150T	HU1002-150BW
2"	HU1002-200T	HU1002-200BW
3"	HU1002-300T	---
4"	HU1002-400T	---



Information contained on this page is for general information purposes only. Seal Fast Inc. assumes no responsibility for errors or omissions for this product.



SEALFAST
THE SIMPLE SOLUTION

PIPE FITTINGS & VALVES

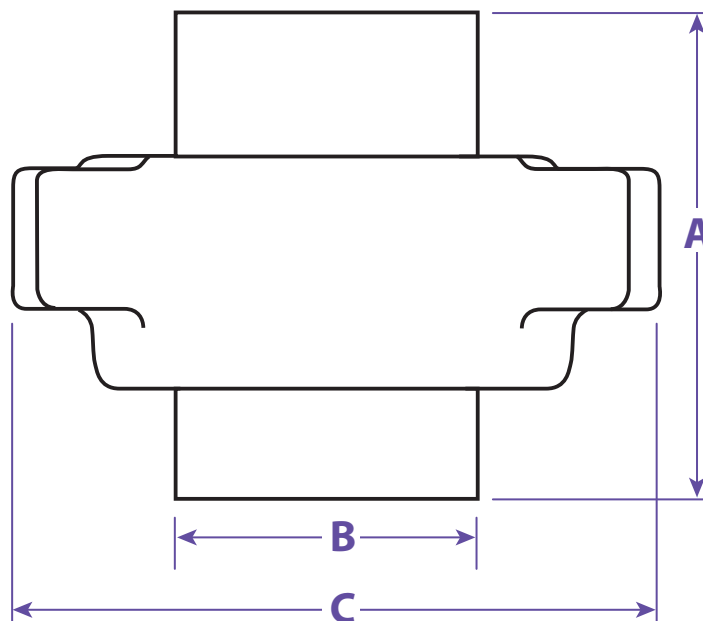


PIPE COUPLINGS

HAMMER UNION - FIGURE 1002

10,000 PSI CWP - 15,000 PSI TEST

Alloy steel forgings for high-pressure manifold & treating connections, such as cementing, fracturing & acidizing. Employs a double seal that combines an elastomeric gasket with a metal-to-metal connection.



Size / Weight								
IN	MM	Lbs	A	B	C	ACME TPI	MATERIAL NUTS SUBS	Part #
1"	25	3.62	3.620	1.750	4.500	6 STD	All Alloy Steel Forging	HU602-100T
1 1/2"	40	9.54	4.600	2.570	5.520	4 STD		HU602-150T
2"	50	13.00	5.200	3.000	7.375	3 MOD		HU602-200T ..BW
3"	80	22.40	6.200	4.240	9.320	4 STD		HU602-300T ..BW
4"	100	33.82	8.280	5.250	10.700	4 STD		HU602-400T ..BW

Standard Service			Pipe Size(in)										End Connection
Fig. No.	CWP	Test	1	1 1/4	1 1/2	2	2 1/2	3	4	6	8		
	SUB	Nut											
1002	10,000	15,000	✓		✓	✓		✓	✓				T / BW

TITLE PIPE COUPLINGS - HAMMER UNION FIGURE 1002

DISCLAIMER

All drawings and specifications are subject to change without notice. Drawings represent general dimensions of our products. Seal Fast cannot guarantee the dimensions of the part will exactly match those in the drawing. This drawing is the property of Seal Fast Inc. Copying or reproduction of this drawing is expressly prohibited.

MATERIAL

Alloy Steel Forging

DRAWING NOT TO SCALE

PART

HU1002-xxxT, BW



SEALFAST
THE SIMPLE SOLUTION